

Common Impact Model

Building a Customised Roadmap Towards Community Acceptance of Local Energy System

A standardised set of tools for energy managers, real-estate developers and micro-grid operators

How do we build community acceptance?

Today, communities can increasingly rely on clean and locally produced energy to satisfy their power, heating and mobility needs. However, this requires engaging many actors. The Common Impact Model is the first structured process to facilitate and manage the acceptance of community energy solutions among all stakeholders.

Contextually responsive

The Common Impact Model has been successfully applied to markedly different environmental, cultural and economic contexts - a sea port, a technology park, and a university campus – and has built acceptance for solutions that generate locally clean energy for their community members.

www.elandh2020.eu



Interested in our Common Impact Model Tool?

You can reach out to:

Thomas Mikkelsen

GECO Global

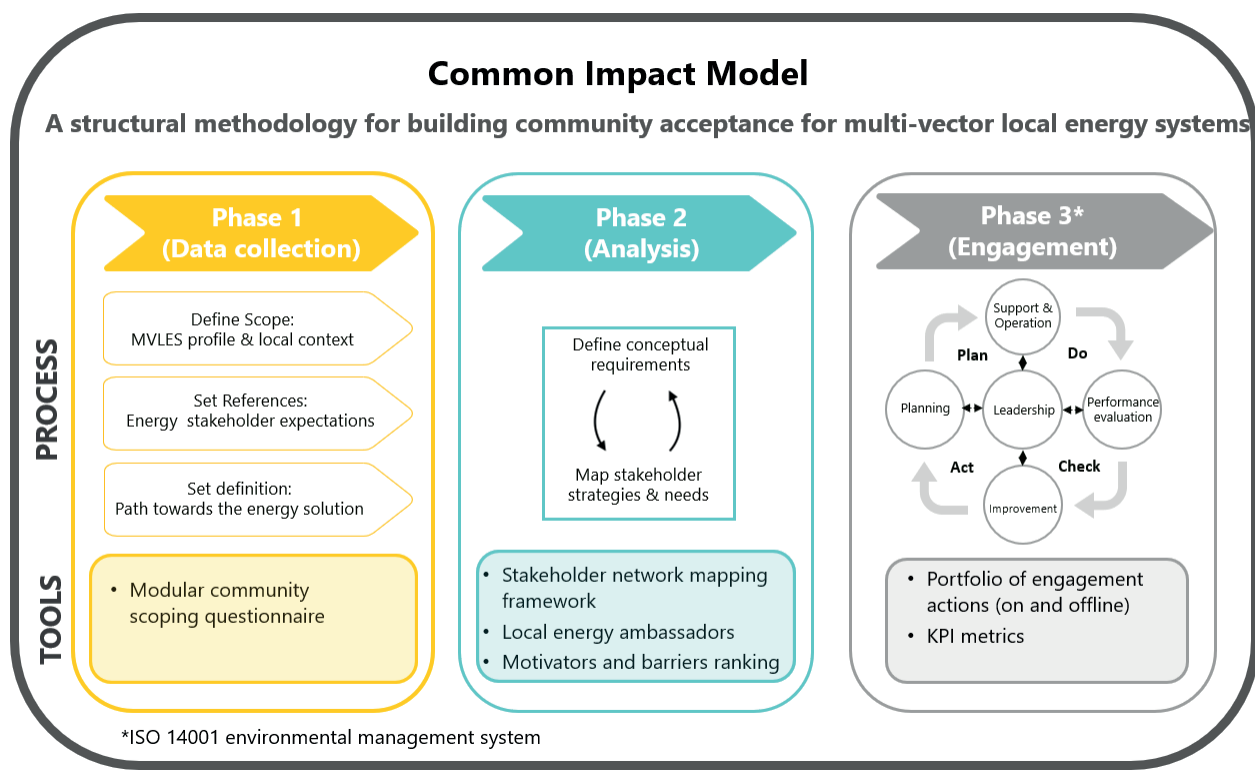
thomas.mikkelsen@geco-global.com



University of St.Gallen



The Common Impact Model



Key Features



Community scoping tools that allow for energy islands to be holistically studied from the perspective of the technical, cultural and theoretical status of the community



Community analysis frameworks that identify the players in each community and map the community's opportunities and barriers towards change and acceptance



Engagement implementation processes that utilize leanings from previous engagement activities to inform future initiatives via feedback loops

Expected Benefits

- Complete a holistic community assessment and contextualized, multi-dimensional mapping of the energy community
- Utilize an agile framework designed to adapt to changing community dynamics and evolving phases of engagement
- Benefit from the standardized and replicable process for building and maintaining community engagement



This project has received funding from the European Union's **Horizon 2020 Research and Innovation programme** under Grant Agreement No **824388**

The information and views set out in this sheet are those of the authors and do not necessarily reflect the official opinion of the European Union. Neither the European Union institution and bodies nor any person acting on their behalf may be held responsible for the use which may be made of the information contained therein.